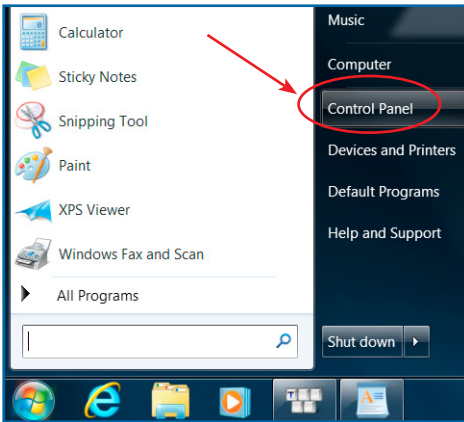


APTB 01/16

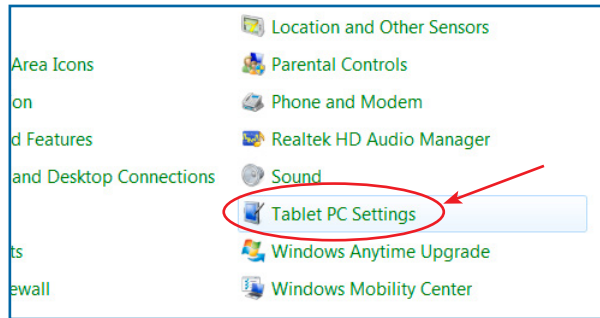
SUBJECT: Scan Tool Touch Screen Calibration

February 05, 2016

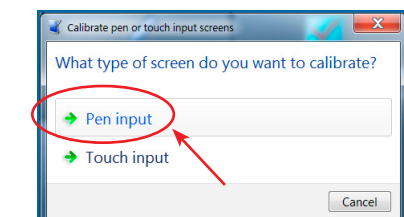
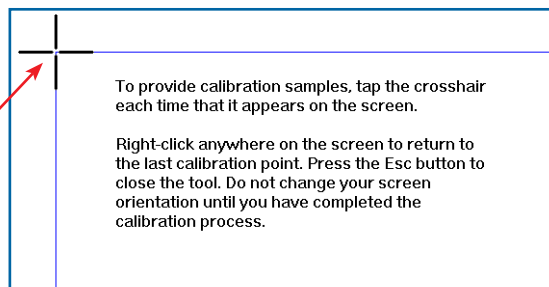
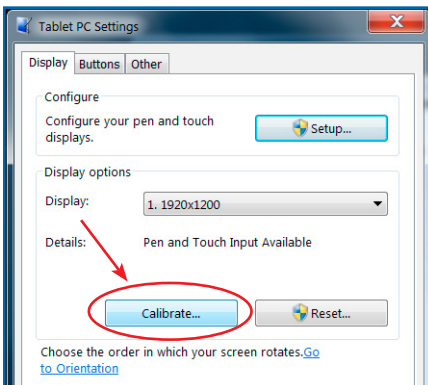
The computers supplied with the Alliant Power scan tool packages feature touch panel displays. Follow the steps below to calibrate the touch panel in the event the touch points do not seem accurate.



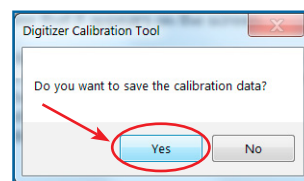
Step 1.
Select "Control Panel" within the Windows start menu.



Step 2.
Select "Tablet PC Settings".



Step 3.
Select "Calibrate" and then select "Pen" or "Touch" depending on which function is being calibrated.



Step 4.
Follow the on screen prompts and select "Yes" to save the calibration data once completed.