

**APTB 01/17**

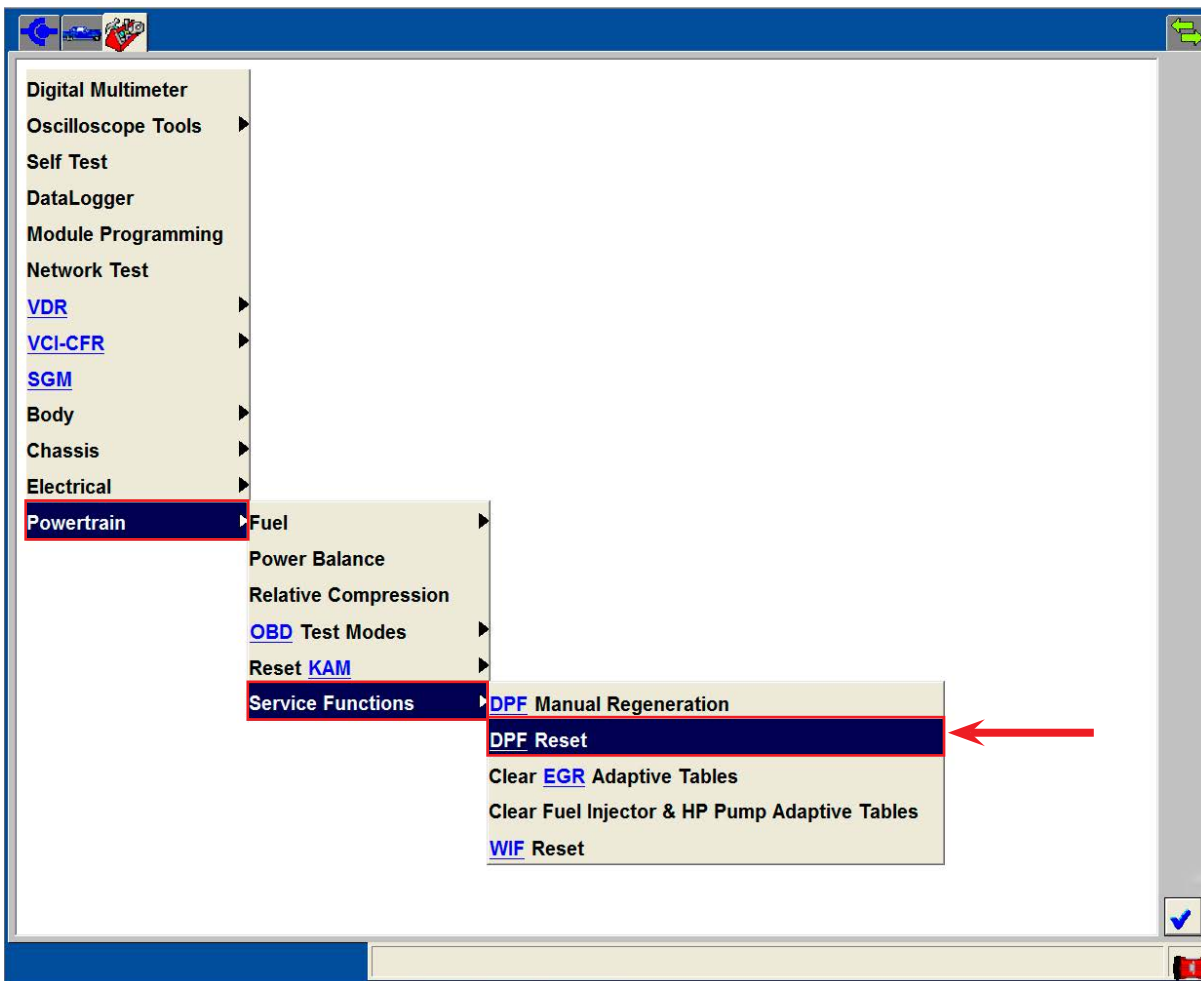
# **SUBJECT: Resetting the Diesel Particulate Filter Parameter**

**February 2, 2017**

After a successful diagnosis and replacement of a Ford® 6.4L Power Stroke® Diesel Particulate Filter (DPF) it is necessary to reset the DPF parameter with a scan tool. This procedure will return the Powertrain Control Module (PCM) setting for the calculated amount of ash in the DPF to its initial default value. Resetting the Keep Alive Memory (KAM) will not reset the DPF parameter in the PCM. The DPF parameter must be reset after installation of a new Alliant Power 6.4L DPF.

The DPF parameter reset function is located in the Ford IDS scan tool under the tool box tab. From there select “Powertrain”, then “Service Functions”, and finally “DPF Reset” as outlined in red below. This procedure must be performed anytime the DPF is replaced.

The procedure below was outlined on a Ford IDS scan tool on a 2008–2010 Ford 6.4L Power Stroke Diesel. If you are not using a Ford IDS scan tool, refer to your specific scan tool manufacturer’s manual for instructions on resetting the DPF parameter.



**Technical Bulletin**