

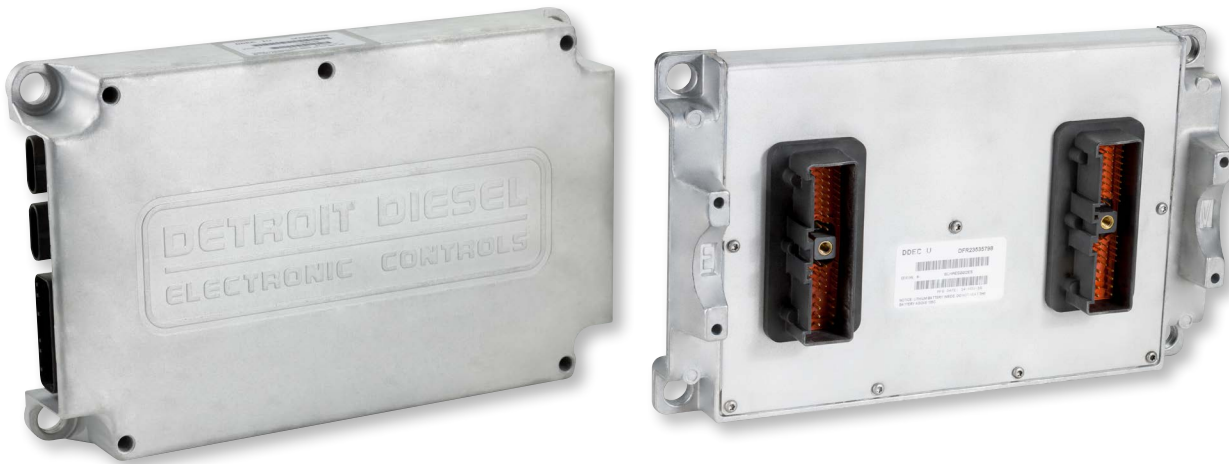
APTB 02/17

SUBJECT: Remanufactured Detroit™ Diesel ECMs

February 15, 2017

Alliant Power now offers remanufactured engine control modules (ECMs) for select Detroit Diesel engines. For further information regarding applications and part numbers refer to [NPA 06/17](#). These ECMs can be purchased in two configurations:

1. Blank ECM – Requires programming by installer
2. Pre-Programmed ECM – Programming is performed at time of purchase by Alliant Power



Detroit Diesel ECMs require programming that is specific to the customer's engine and vehicle configuration. The following information must be provided at the time of purchase to receive a pre-programmed ECM.

- Engine Serial Number or Unit Number (will begin with 05R for Series 50® or 06R for Series 60®)
- Vehicle Identification Number

Any changes that have been made from the original factory settings to the customer programmable parameters (such as cruise settings, engine brake settings, etc) or injector trim codes that were done with an authentic Detroit Diesel service tool will automatically be loaded to the ECM during the programming process. Changes made with any service tool other than an authentic Detroit Diesel service tool will not be transferred during the programming process. In this case, the ECM will be delivered with the original factory settings in place and any needed adjustments must be made after ECM installation.