

## FORD 6.0L POWER STROKE

### Fuel Injectors



| Application Data  | Notes                                       | Reman                                 | New                                   | OEM Cross Reference  |
|---|---|---------------------------------------|---------------------------------------|--|
| <b>Alliant Power</b>  |   |                                       |                                       |  |
| 2003-09/21/2003:<br>F-250/350/450/550,<br>Excursion<br><br>ESN Range: 0 to 137,745<br>(Alabama built)           | Engines built<br>BEFORE<br>09/22/2003.      | AP60900 <sub>A</sub><br>G2.8 Injector | AP60800 <sub>A</sub><br>G2.8 Injector | 3C3Z9E527EBRM,<br>3C3Z9E527EARM,<br>3C3Z9E527AE,<br>3C3Z9E527ABRM,<br>3C3Z9E527ECRM,<br>6901-PP, 6918-PP |
| 2003-09/21/2003:<br>F-250/350/450/550,<br>Excursion<br><br>ESN Range: 6,000,000 to<br>6,155,636 (Indiana built) |   |                                       |                                       |  |
| 2003-09/21/2003:<br>F-650/750<br><br>ESN Range: 0 to 112,360<br>(Alabama built)                                 |   |                                       |                                       |  |
| 09/22/2003-2007:<br>F-250/350/450/550,<br>Excursion   |   |                                       |                                       |  |
| 2005-2007: F-650/750  | Engines built<br>ON or AFTER<br>09/22/2003. | AP60901 <sub>A</sub><br>G2.8 Injector | AP60801 <sub>A</sub><br>G2.8 Injector | 4C3Z9E527AA,<br>4C3Z9E527BRM,<br>7E7Z9E527AA,<br>6902-PP, 6919-PP  |
| 2004-2010: E Series   |   |                                       |                                       |  |
| 2006-2010: 4.5L LCF   |   |                                       |                                       |  |

\*See Alliant Power Technical Bulletin APTB 02/08 R1 for injector failure analysis and preventive maintenance.

### Turbochargers

| Application Data  | Notes | Reman                                       | New   | OEM Cross Reference |
|---|-------|---|---|---------------------|
| <b>Garrett</b>  |       |   |   |                     |
| 2003:<br>F-250/350/450/550,<br>Excursion                |       | 725390-9006S <sub>B</sub> *<br>Turbocharger | 725390-5006S <sub>B</sub> *<br>Turbocharger | 3C3Z9G489ABRM       |
| 2004-2005:<br>F-250/350/450/550,<br>Excursion, E Series |       | 743250-9024S <sub>C</sub> *<br>Turbocharger | 743250-5024S <sub>C</sub> *<br>Turbocharger | 4C3Z6K682CDRM       |
| 2005-2007:<br>F-250/350/450/550,<br>Excursion           |       | 743250-9025S <sub>D</sub> *<br>Turbocharger | 743250-5025S <sub>D</sub> *<br>Turbocharger | 5C3Z6K682CCRM       |
| 2005-2010: E Series                                     |       |   |   |                     |

\*See Alliant Power Technical Bulletin APTB 02/21 for turbo identification.

# ALLIANT POWER OFFERS

## FORD 6.0L POWER STROKE

### Modules

| Application Data                                 | Notes  | Reman  | New   | OEM Cross Reference   |
|--|--|--|---|---|
| <b>Alliant Power</b>                             |  |  |   |   |
| 2003-2007:<br>F-250/350/450/550, Excursion       |  |  | AP63406 <sub>A</sub><br>Glow Plug Control<br>Module | YC3Z12B533AA, DY876   |
| 2004-2010: E Series                              |  |  |   |   |
| 2003-09/21/2003:<br>F-250/350/450/550, Excursion | Pre-programmed. Engines built<br>BEFORE 09/22/2003.      | AP65122, AP65122N*<br>Fuel Injection Control<br>Module |   | 4C3Z12B599ABRM,<br>4C3Z12B599AB, 4C3Z12B599CRM,<br>4C3Z12B599AARM |
| 09/22/2003-2004:<br>F-250/350/450/550            | Pre-programmed. Engines built ON or<br>AFTER 09/22/2003. | AP65123, AP65123N*<br>Fuel Injection Control<br>Module |   | 4C3Z12B599ABRM,<br>4C3Z12B599AB,<br>4C3Z12B599DRM                 |
| 09/22/2003-01/31/2005: Excursion                 |  |  |   |   |
| 2005-2007: F-250/350/450/550                     | Pre-programmed.  | AP65124, AP65124N*<br>Fuel Injection Control<br>Module |   | 4C3Z12B599ABRM,<br>4C3Z12B599AB, 4C3Z12B599ERM                    |
| 02/01/2005-2005: Excursion                       |  |  |   |   |
| 2004-2010: E Series                              |  |  |   |   |

\*N after the part number means no core

### Pumps

| Application Data                                 | Notes   | Reman                             | New                   | OEM Cross Reference                                 |
|--|---|-----------------------------------|-----------------------|---|
| <b>Alliant Power</b>                             |   |                                   |                       |   |
| 2004½-2007: F Series, Excursion                  | Includes seal kit.  | AP63661<br>High-Pressure Oil Pump |                       | 5C4Z9A543A, 5C4Z9A543B,<br>5C3Z9A543C, 5C3Z9A543ARM |
| 2004½-2010: E Series                             |   |                                   |                       |   |
| 2006-2007: 4.5L LCF                              | Includes seal kit.  | AP63662<br>High-Pressure Oil Pump |                       | 6E7Z9A543BRM  |
| 2008-2010: 4.5L LCF                              | Includes seal kit.  | AP63663<br>High-Pressure Oil Pump |                       | 8E7Z9A543CRM  |
| 2003-2004:<br>F Series, Excursion, E Series      | Includes seal kit.  | AP63625<br>High-Pressure Oil Pump |                       | 3C3Z9A543AARM,<br>4C3Z9A543AARM, HP032X             |
| 2003-07/19/2004:<br>F-250/350/450/550, Excursion | Includes mounting gasket. F-650/750 use<br>AP63583 Water Pump Navistar VT365. |                                   | AP63502<br>Water Pump | 3C3Z8501A, PW480                                    |
| 2004-07/19/2004: E Series                        |   |                                   |                       |   |
| 07/20/2004-2007:<br>F-250/350/450/550, Excursion | Includes mounting gasket. F-650/750 use<br>AP63583 Water Pump Navistar VT365. |                                   | AP63503<br>Water Pump | 4C3Z8501AC, PW491                                   |
| 07/20/2004-2010: E Series                        |   |                                   |                       |   |
| 2006-2010: 4.5L LCF                              |   |                                   |                       |   |
| <b>Bosch</b>                                     |   |                                   |                       |   |
| 2003-2004:<br>F Series, Excursion, E Series      | Includes seal kit.  | HP032X<br>High-Pressure Oil Pump  |                       | 3C3Z9A543AARM,<br>4C3Z9A543AARM                     |





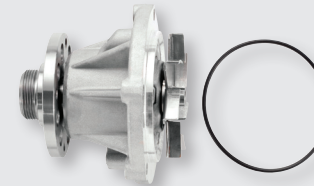
**AP65122, AP65123, AP65124**  
Remanufactured FICM  
**AP65122N, AP65123N, AP65124N**  
Remanufactured FICM-No Core  
(See Application Guide for year range)  
(6.0L only)



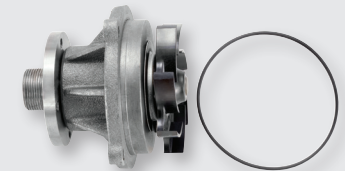
**AP63412**  
2003-2010  
Engine Speed/Position Sensor  
(6.0L only)



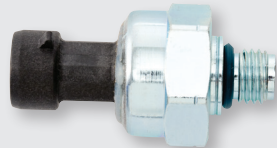
**AP63448**  
2003-2010  
Belt Tensioner  
(6.0L only)



**AP63503**  
2004-2010  
Water Pump



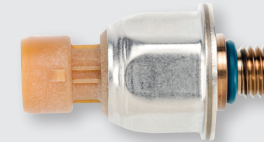
**AP63583**  
2002-2007  
Water Pump  
(VT365 only)



**AP63407**  
2003-2004  
ICP Sensor



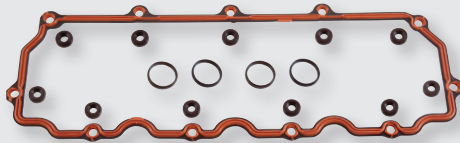
**AP60800, AP60801**  
New G2.8 Injector  
**AP60900, AP60901**  
Remanufactured G2.8  
Injector  
(See Application Guide  
for year range)



**AP63460**  
2004-2010  
ICP Sensor



**AP63431**  
2004-2010  
VFCM  
(6.0L only)



**AP0023**  
2003-2010  
Valve Cover Gasket



**AP63415**  
2003-2010  
Engine Speed/Position Sensor



**EXCLUSIVE PARTS**  
**AP0028**  
2003-2010  
Stand Pipe and Front Port Plug Seal Kit



**AP63416**  
2003-2004  
IPR Valve  
(w/out edge filter)



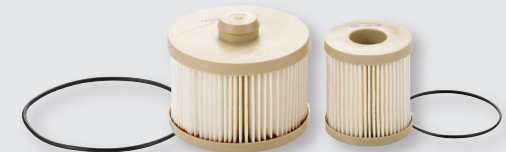
**AP63417**  
2005-2010  
IPR Valve  
(w/edge filter)



**AP63430**  
2003-2010  
Fan Clutch  
(6.0L only)



**AP63481**  
2004-2010  
Turbo Installation Kit

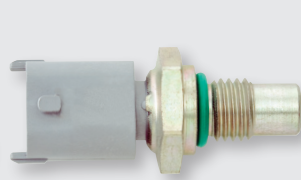


**PFF4606 RACOR**  
2004-2010  
Fuel Filter Element Service Kit  
(6.0L only)





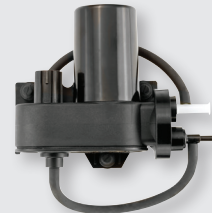
**AP63661**  
2004½-2010  
Remanufactured HPOP



**AP63437**  
2003-2010  
EOT/ECT/FT Sensor



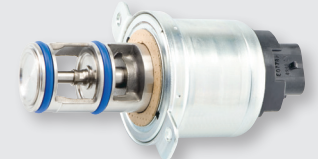
**AP63703**  
2004-2010  
Vacuum Pump-Mechanical  
(6.0L only)



**AP63433**  
2003-2007  
Vacuum Pump-Electronic  
(6.0L only)



**EXCLUSIVEPARTS**  
**AP0002**  
2002½-2010  
G2.8 Injector Seal Kit



**AP63438R, AP63439R\***  
2003-2010  
EGR Valve  
(\*Ford only)



**BOSCH** **HP032X**  
2003-2004  
Remanufactured HPOP



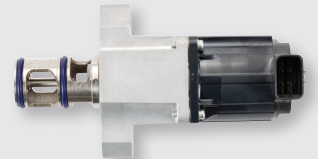
**AP63406**  
2003-2010  
GPCM



**AP60800, AP60801**  
New G2.8 Injector  
**AP60900, AP60901**  
Remanufactured G2.8  
Injector  
(See Application Guide  
for year range)



**AP0005**  
2003-2010  
EGR Valve O-ring Kit



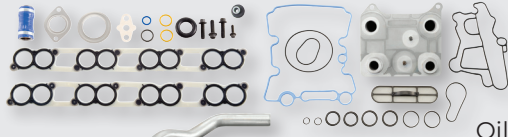
**AP63459**  
2004-2006  
EGR Valve  
(VT365 only)



**AP0018, AP0019, AP0020**  
2003-2010  
FICM Connector  
**EXCLUSIVEPARTS**



**AP0017**  
2003-2010  
G2.8 Injector Connector  
Removal Tool



**AP63445**  
2004-2010  
Oil Cooler/EGR Cooler Kit  
**EXCLUSIVEPARTS**



**AP0031, AP0032, AP0033**  
2003-2010  
FICM Connector Pigtail  
(6.0L only)  
**EXCLUSIVEPARTS**



**RK31821**  
2003-2010  
Oil Filter Cap  
**RACOR**



**RK32138**  
2004-2010  
Oil Filter Cap  
(6.0L only)  
**RACOR**



**PFL2016**  
2003-2010  
Oil Filter Element  
Service Kit  
**RACOR**